

Deposit return system (DRS) in Lithuania

Ministry of Environment (MoE)

17 June 2020



The start of DRS in Lithuania

For **refillable** packaging – since 2006

Only manual collection in shops



For **non-refillable** (single-use) packaging – since 1st February 2016

RVMs and manual collection in shops



Legal basis

- Main provisions (responsibilities of the system participants) – in the Law
- The collection and recycling targets set by The Government
- Issues laid down in Minister's Orders:
 - *the mark* proving that packaging participates in the deposit system (deposit sign)
 - *the deposit rate*
 - *the rules how the administrator of the deposit system should report* about activity results (provide system organization plan, financing scheme, public awareness program, reports)



Types of beverages participating in DRS

- Natural water, mineral water, mountain spring water
- Table water
- Soft drinks
- Juice
- Nectars
- Kvass
- Beer, its cocktails
- Cider, pear Cider
- Alcohol cocktails / drinks
- Fruit wine, its cocktails / drinks



Features of packaging participating in DRS

Material:

- Plastic (PET)
- Metal
- Glass



Volume:

- from 100 ml
- up to 3 l

Possibility to accept automatically



Collection points

Obligatory in the shops from 300 m² in urban areas and from 60 m² in rural areas

- ✓ Not further than 150 m from the shop
- ✓ Operating at the same hours as the shop
- ✓ Deposit is applied as a discount in shop or returned in cash

Voluntary in the smaller shops, market places, petrol stations, kiosks, catering



Responsibilities of the system participants

Producers and importers of beverages should:

- ✓ mark their packaging with bar code and deposit sign
- ✓ collect and account the deposit for every unit (0,10 EUR)
- ✓ organize and finance the DRS through the administrator
- ✓ account and report about packaging they've put on the market



Retailers of beverages should :

- ✓ collect and account the deposit for every unit (0,10 EUR)
- ✓ inform consumers on the terms of returning packaging



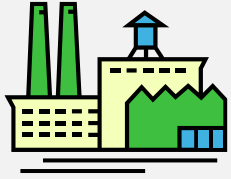
Requirements for the Administrator

- ✓ Should be non-profit public entity
- ✓ Can operate only with agreed organization plan, financing scheme and public awareness program
- ✓ Must have agreements with beverage producers and importers, packaging retailers
- ✓ Organizes the return of the packaging and its management
- ✓ Provides necessary equipment for collection points at retailers
- ✓ Selects packaging collectors and recyclers by public tender procedures
- ✓ Ensures fulfillment of collection and recycling targets in the name of beverage producers and importers
- ✓ Organizes public awareness (must allocate at least 1% of annual turnover)



How DRS works

Beverage producers and importers



Producers supply beverages to retailers and retailers pay the price of beverage and deposit

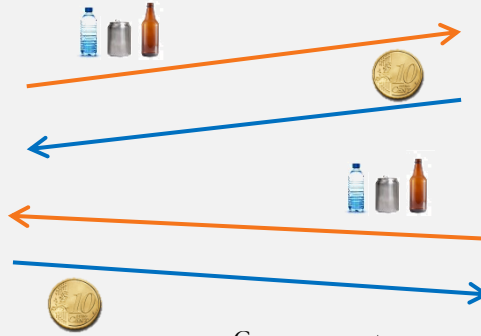


Producers and importers pay deposit to the DRS administrator



Retailer returns empty beverage packaging to the DRS administrator and the administrator gives him back the deposit

Retailers sell beverages to the consumers and consumers pay to retailers the price of products and the deposit



Consumer returns empty beverage packaging and retailer gives him back the deposit



Benefits

Decrease of beverage packaging waste in public spaces, landfills, **sorting promotion**



Allows to return **up to 95%** of packaging, better quality of waste materials



Investments will return after **5 years**



Benefits

No Public investments, no funds needed, **only private investments**



About 70% of deposit is spent in the same shop, **loyalty**



Orders to transport companies, **new job creation**



Facts and figures

- ✓ Investments in DRS – about 30 million EUR.
- ✓ New job places – about 1200.
- ✓ Quantity of RVMs – about 1100.
- ✓ The returned and recycled rate in first year – 70 %, last year – 90 %.
- ✓ About 90 % of packaging returned using RVMs.



Ačiū

Thank you

Contact details:

Neringa Paškauskaitė
Chief Officer Waste Policy Group
Ministry of Environment
Republic of Lithuania
Email: neringa.paskauskaite@am.lt

