

Single-Use and Reuse United: DRS Interplay

June 18 2025 | Brussels



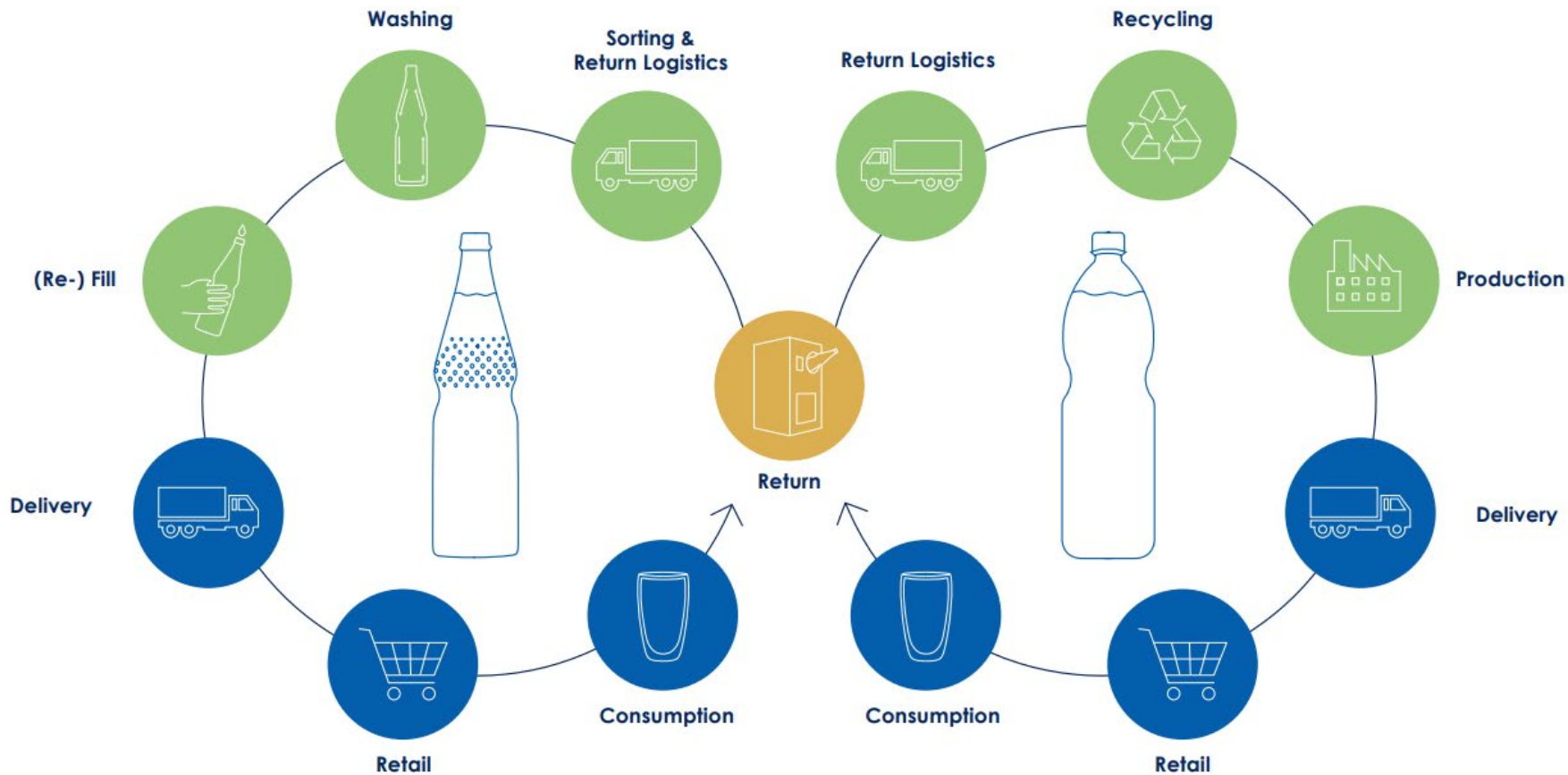
Arbeitskreis Mehrweg (Refillable Working Group)



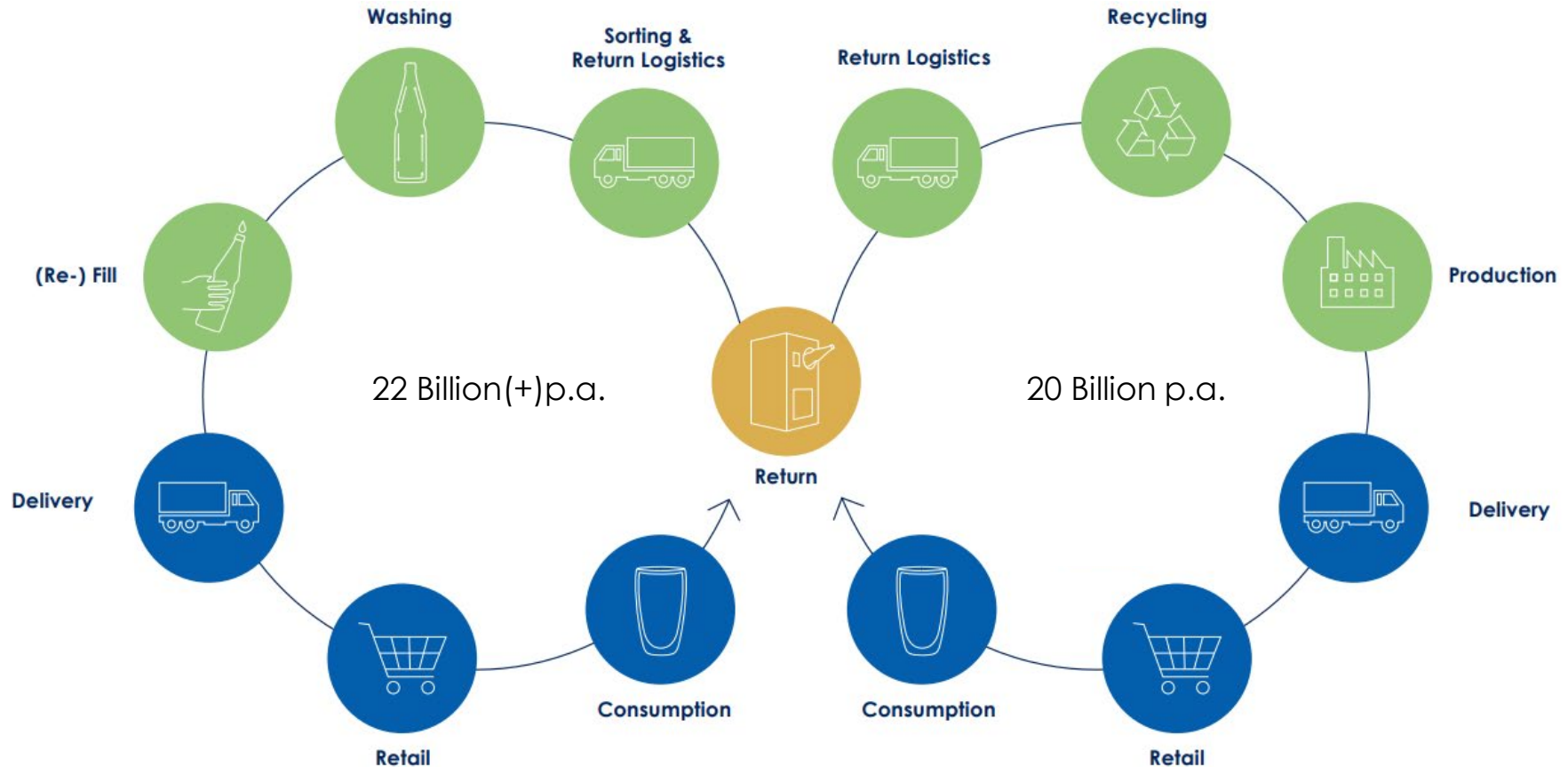
- ▶ Managing the Refillable Logo based on a recognized governance scheme
- ▶ Working as a think tank & information point about reusables, serving established companies, start-ups, authorities and science
- ▶ Joint Organization of 8 Associations of Beverage Industry, Retail and environmental NGOs
- ▶ 230+ Companies with more than 600 brands in Germany (and Austria, Switzerland, France)
- ▶ Founded 2005

System





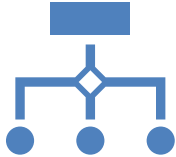
Containers in the System p.a.



Status of the German DRS

- ▶ Collection rate for both Reuse and Single-Use beverage containers around **99%**
- ▶ Decentral system for DRS – with centralized governance & co-ordination body
- ▶ Subsidiarity as a guiding principle in reuse systems

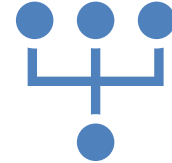
Some Background to the structure



System operator can't
(micro-) manage all
layers of a high-scaled
(reuse) system



Allows to integrate
market mechanisms as
driver for efficiency



The governance
structure is not the
system, its part of the
system!

Selected relevant Variables

- Size of the System
- Structure of Retail
- Number of (Beverage) Producers
- Structure of Industry
- Structure of Recyclers





Tobias Bielenstein

Arbeitskreis Mehrweg GbR
Kennedyallee 36 | 53175 Bonn

tb@mehrweg.org

+ 49 228 95 95 915 | +49 171 495 1047

